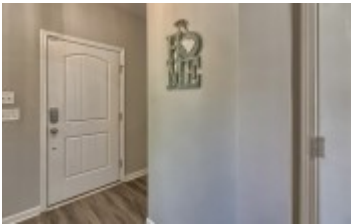


1268 Portrait Hill Dr - Chapin, SC 29036



Presenting a beautiful home for your consideration!

Property Details

5 Bedroom(s)
3 Bath(s)
1 Half Bath(s)

SQFT

| | |
|-------------|------|
| Total | 2848 |
| Main Level | 1272 |
| Upper Level | 1576 |
| Garage | 443 |



Kyzer & Dooley Real Estate Team

Office Phone: 803-957-5566

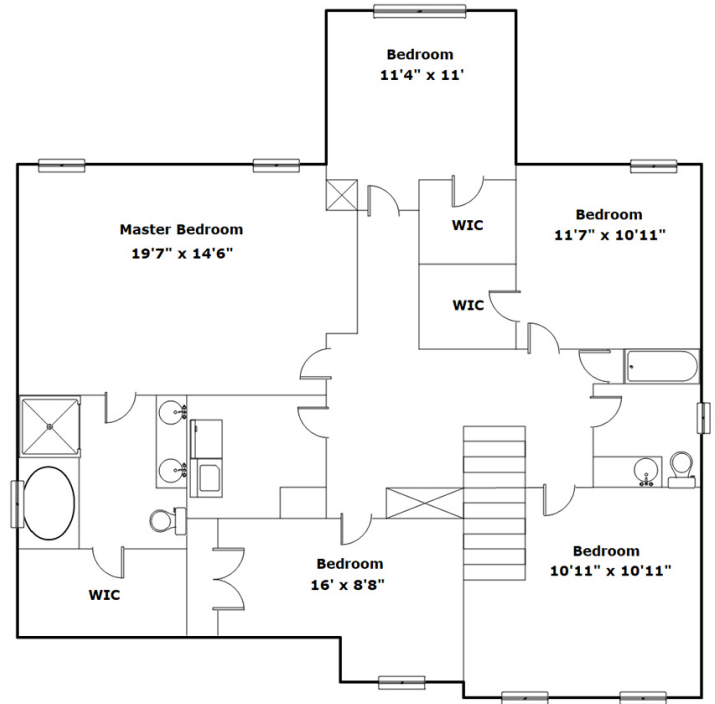
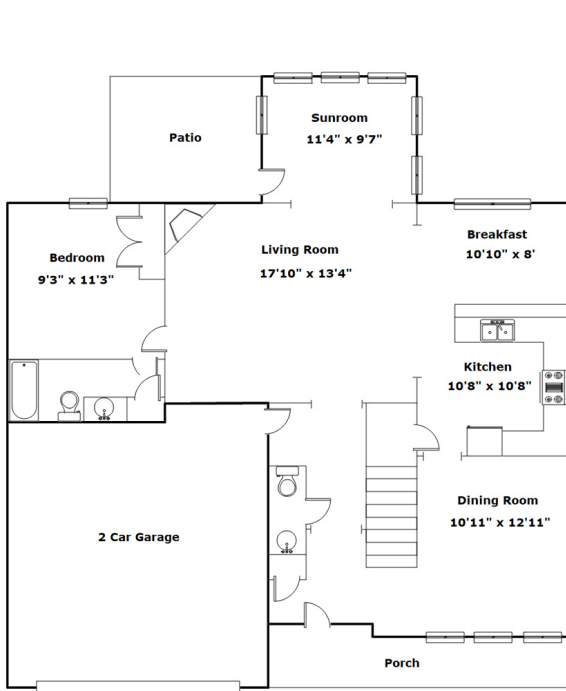
Cell Phone: 803-446-5543

kyzerm@yaho.com

Information is deemed reliable but not guaranteed!



1268 Portrait Hill Dr - Chapin, SC 29036



Drawn by: Look2 Homes Columbia

<http://www.look2homes.com/l2fp/floorplan/index.php?oid=20857>



Kyzer & Dooley Real Estate Team

Office Phone: 803-957-5566

Cell Phone: 803-446-5543

kyzerme@yahoo.com

Information is deemed reliable but not guaranteed!

