

2465 Walhalla Highway - Pickens, SC 29671



This beautiful custom built home on over 4 acres with a 13x32 gunite pool is ready for summer fun! Conveniently located to Clemson, Seneca, Easley and Pickens, you're going to enjoy country living without sacrificing any conveniences. On the main floor you will find a huge dining room and living room. The spacious kitchen features an over-sized eat at bar and access to the rear deck. Enjoy your morning coffee overlooking your beautiful pool. The large master bedroom is also located on the main floor with 2 walk-in closets, a jetted tub, separate shower, and double vanity. Head upstairs to 2 more bedrooms with new carpet in both. The upstairs bathroom has also been newly painted. Above the garage you will find a huge bonus room that is perfect as an extra bedroom or a rec room. The large laundry room features a sink and storage space. The unfinished, walkout basement is framed for additional bedrooms and has also been plumbed for a future bathroom. Offered at \$415,000.00

Property Details

3 Bedroom(s)
2 Bath(s)
1 Half Bath(s)

SQFT	
Total	4229
Main Level	1660
Upper Level	464
FROG	434
Unfin. Basement	1671
Garage	663



LeeAnn Regna

Cell Phone: 864-884-5576

lregna@cbcaine.com

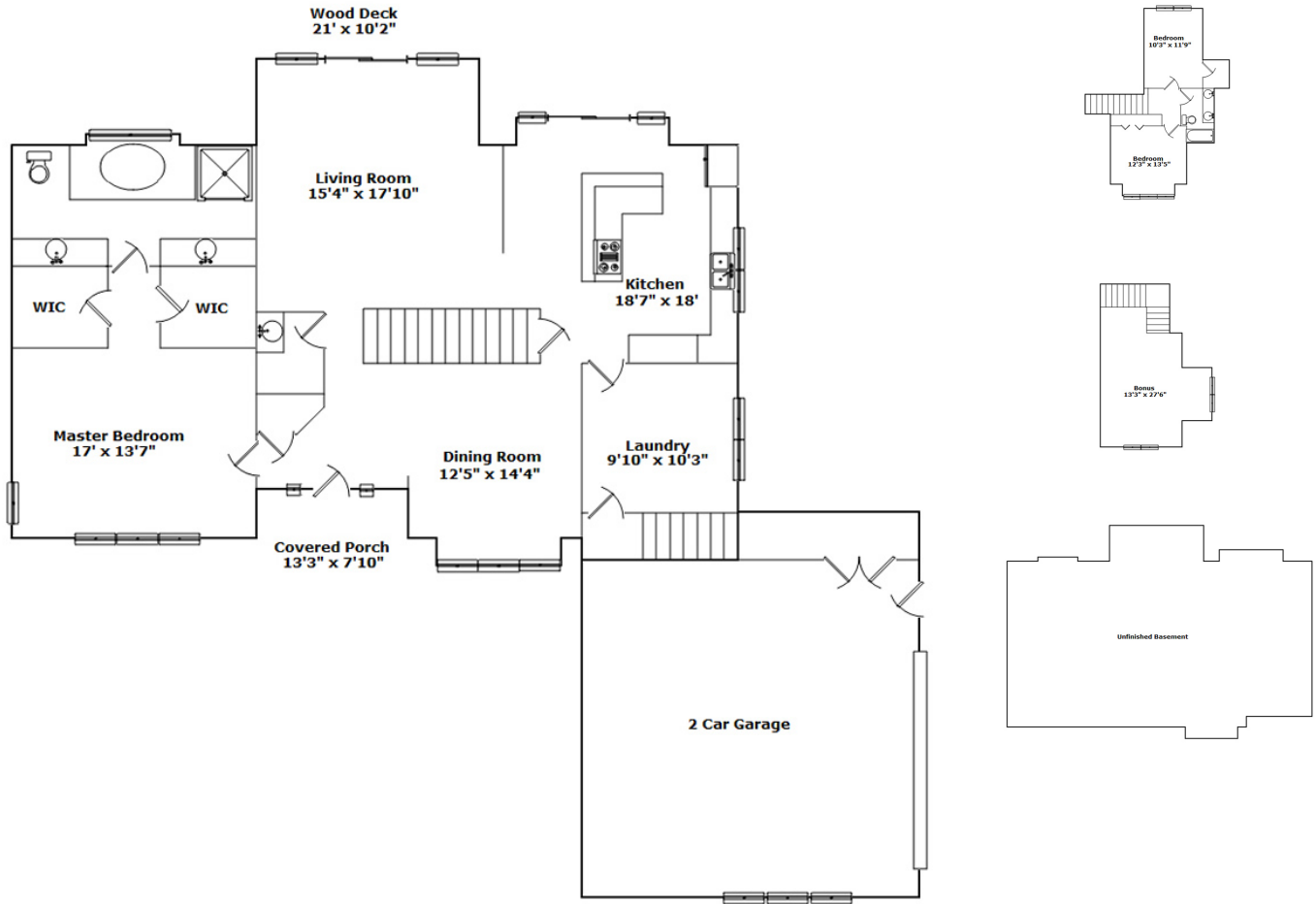
<http://bit.ly/LeeAnnRegna>

Information is deemed reliable but not guaranteed!



COLDWELL BANKER
CAINE

2465 Walhalla Highway - Pickens, SC 29671



Drawn by: Look2 Home Marketing Upstate SC

View this floor plan online at
<https://tours.look2homes.com/index/20663>



LeeAnn Regna

Cell Phone: 864-884-5576

lregna@cbcaine.com

<http://bit.ly/LeeAnnRegna>

Information is deemed reliable but not guaranteed!



**COLDWELL BANKER
CAINE**